



The legal workplace has changed



The MPS Team
From solutions to software

Fast-tracking digital transformation

The new normal

The MPS Team gives law firms the tools to concentrate on their core roles, comply with rules and regulations, and compete with other forward-looking firms while maximising profitability.

As document and workflow specialists, we provide bespoke and scalable solutions to enable and streamline hybrid working:

- Rapidly capture, auto-index and upload documents into your document repository from any source.
- Provide best-in-class hardware to enable user printing from anywhere, directly integrating with your case management system.
- Automate key tasks to allow fee-earners and support staff to focus on billable work and delivering the best client experience.
- Secure sensitive client and company data.

Partnering with leading hardware and software providers, our dedicated team take a consultative approach to better understand the challenges faced by your firm.

The value of digital technology and solutions has only become more evident over the past year, and organisations need to build operational resilience to survive this new reality. Those enterprises able to use technology to rethink their business model, by fast-tracking digital transformation, will be the ones ahead of their competition.



Integrated hybrid workplace solutions

Your bespoke solution

The MPS Team will work with you to assess your specific challenges and goals, before creating a bespoke solution designed to accommodate hybrid working and changing office environments. Our team take a consultative approach to guide businesses through their Digital Transformation roadmaps, providing an integrated and secure workplace solution that is resilient and adaptable for any working environment or location.

Your hybrid solution will provide efficiencies, improve collaboration, foster knowledge sharing, and increase productivity. All fronted by accessible, user-friendly technology.

Managed Print Solutions

- Control and monitor output to reduce usage and spend.
- Integration with Case/Practice Management systems, granular reporting for Management Information (MI) and trend analysis.
- Environmental / sustainability – automate your CSR policy. Make your office devices carbon neutral.
- Job submission and delegation, allowing users to submit and track printing and scanning work to be fulfilled in the office on their behalf.

Automation and direct scanning into document management systems

- Using RPA tools to streamline processes, improve efficiency and compliance.
- Allow firms to take on more instructions (and in turn, more revenue) without additional employees.
- Provide enhanced client outcomes and experiences, and reduce time to close cases.
- Digital Mailroom provides resilience and business continuity in case of denial of access to offices.
- * Archive/batch scanning – digitise hard copy files, reclaim office space, reduce storage costs and improve compliance.
- Ad-hoc scanning by end-users directly to file storage.

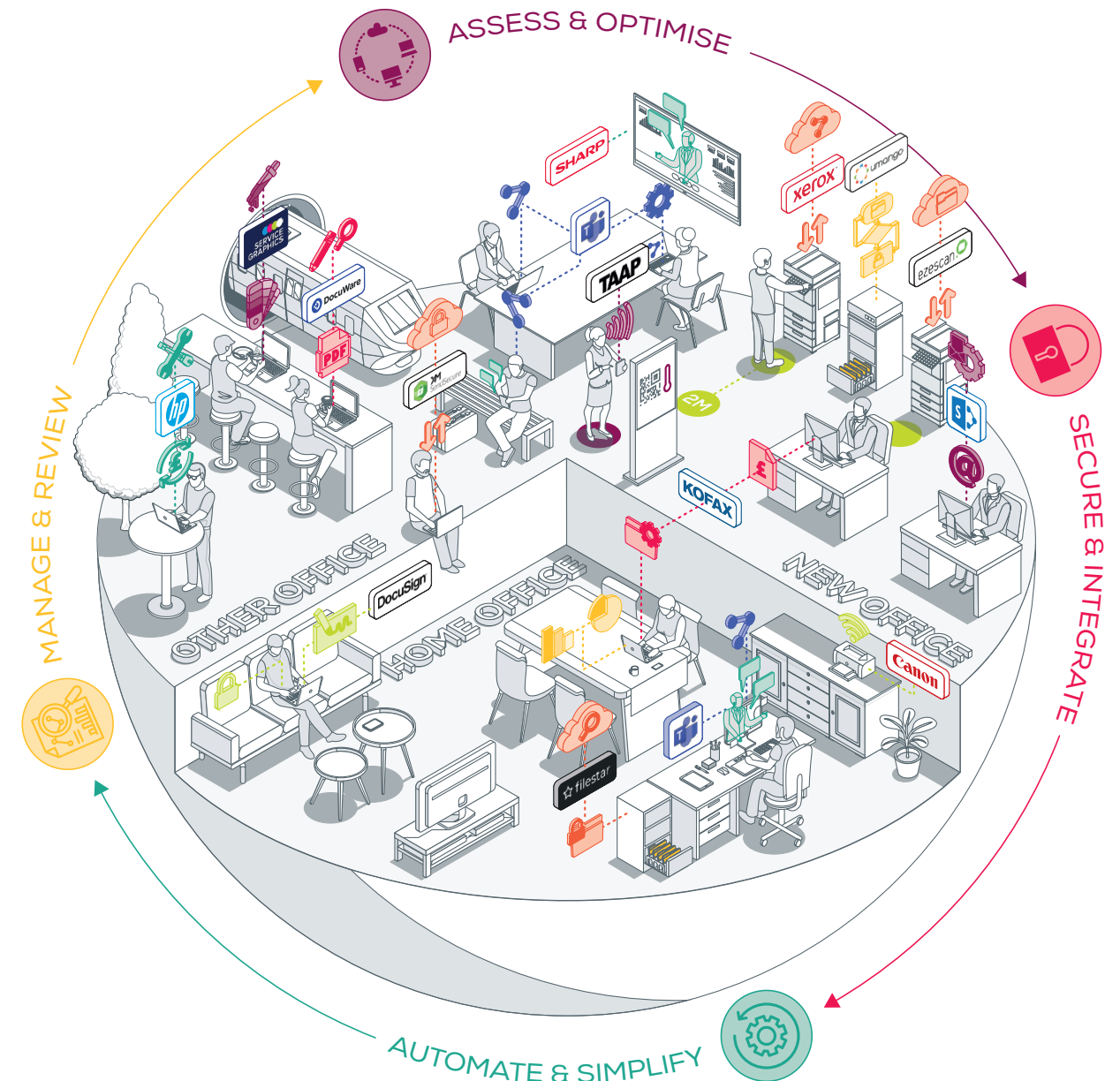
Seamless integration

Next Steps

The MPS Team will complete a comprehensive review of your current infrastructure to discover what is preventing you from transitioning seamlessly and securely between your home and changing office environments.

Using industry-leading workflow mapping and assessment tools, we will provide you with the full picture on exactly how documents and data move through your firm.

Integrated hybrid workplace solutions are agile and can flow seamlessly between home and changing office environments



Providing unrivalled integration, productivity and security

The MPS Team is a leading MPS provider in the UK, a Canon Silver Partner, a HP Amplify Power Services Partner and one of only a select few Xerox Platinum Partners.

For more information on how The MPS Team could benefit your organisation, or to request examples of our recent case studies, contact one of our friendly account managers today.

T: 0345 123 2987

E: hello@thempsteam.com

www.thempsteam.com



A specialist division of



Part of Paragon Group



ZenOffice Ltd, ZenOffice House, Gateway Crescent, Broadway Business Park, Chadderton, Greater Manchester OL9 9XB